

# Treatment of the subarachnoid–pleural fistula

## Case report

SERDAR OZGEN, M.D., BURAK O. BORAN, M.D., ILHAN ELMACI, M.D., UGUR TURE, M.D.,  
AND M. NECMETTIN PAMIR, M.D.

*Marmara University, Department Of Neurosurgery, Istanbul-Turkey*

Subarachnoid–pleural fistula is a rare type of cerebrospinal fluid (CSF) fistula, and there are only several cases reported in the literature. The authors describe a 65-year-old male patient in whom a diagnosis of T7–8 disc herniation had been made. He underwent surgery via a right lateral extracavitary approach. Postoperatively he developed progressive respiratory distress and headache. A chest x-ray film revealed a pleural effusion, and computerized tomography (CT) myelography demonstrated a subarachnoid–pleural fistula at the level at which the herniated disc had been removed. The patient had been managed via a CSF drainage system and a chest tube. He was discharged after relief of symptoms was attained. Subarachnoid–pleural fistulas can be secondary to traumatic injury and surgery, or they can be spontaneous. Patients present with rapidly filling pleural effusion and headache. A diagnosis can be established using CT myelography or myeloscintigraphy. Treatment is conservative, with the placement of a chest tube and insertion of a CSF drainage catheter, and surgical repair should be considered only if the conservative therapy fails.

**KEY WORDS** • subarachnoid–pleural fistula • thoracic spine • extracavitary approach

Subarachnoid–pleural fistula is a rare type of CSF fistula. There have only been 54 cases reported in the literature.<sup>1–6,8–30</sup> The fistula may develop secondary to traumatic injury<sup>1–3,5–8,11,14,15,17,20–24,26,29,30,32–42,44,47–52,</sup> or surgery.<sup>4,9,10,12,13,16,18,19,25,27,28,34,43,45,53,54</sup> Although it is rare, because of its severe clinical picture, diagnosis and treatment are of vital importance. A case of subarachnoid–pleural fistula is presented, and we review the literature, concentrating on the clinical presentation, diagnostic modalities, and treatment strategies.

### CASE REPORT

**Presentation.** This 65-year-old male presented with a long history of lumbar and bilateral radicular leg pain. He had previously undergone a laminectomy for the treatment of T10–11 disc disease.

**Examination.** Physical examination demonstrated bilateral increased deep tendon reflexes and hypesthesia beneath the level of T-10. His MR images revealed a thoracic disc herniation narrowing the spinal canal at the level of T7–8.

**Operaton.** He underwent surgery via a right lateral extracavitary approach. The right-sided T-8 nerve root had

been sectioned and root sleeve tied. The intervertebral disc was calcified and adherent to dura anteriorly. Following the T7–8 discectomy a CSF leak was observed, but after the intervertebral space had been packed with Curaspon, an absorbable gelatin sponge (Clinimed Holding Ijweg 91, 1161 ET Zwanenburg, The Netherlands) the leakage ceased. Positive abdominal pressure has been applied by forced ventilation, and no leakage was detected. Additionally a 1 to 2–cm tear in the pleura was noticed but not repaired.

**Postoperative Course.** On the 3rd postoperative day, the patient developed progressive respiratory distress and headache. His chest x-ray film revealed a pleural effusion. The effusion was drained via a tap. The fluid was slightly hemorrhagic, and the biochemical profile was as follows: glucose 59 mg/dl; pleural fluid/serum protein ratio 0.17; and pleural fluid/serum LDH ratio 0.34 (which indicated that the fluid was a transudate). Two days later, the effusion rapidly filled again. A subarachnoid–pleural fistula was suspected. A lumbar external drainage catheter was inserted at L4–5, and the position of the catheter was checked by administration of a contrast material under fluoroscopy. However only few milliliters of CSF could be drained. Computerized tomography myelography revealed the fistula at the surgical level (Fig. 1).

**Second Operation.** The patient underwent surgery, and the pleura was repaired using muscle flap. Cerebrospinal fluid was leaking from the intervertebral space, but be-

Abbreviations used in this paper: CSF = cerebrospinal fluid; CT = computerized tomography; LDH = lactate dehydrogenase; MR = magnetic resonance.

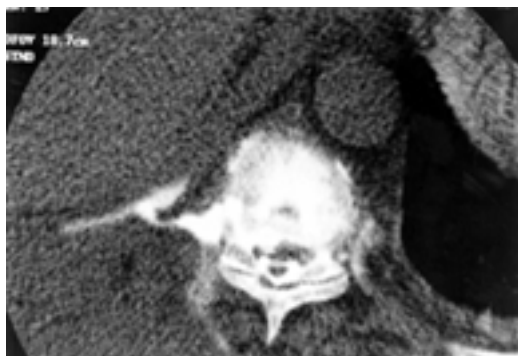


Fig. 1. Computerized tomography myelography demonstrating the subarachnoid-pleural fistula at the level where surgery had previously been performed.



Fig. 2. Chest x-ray film revealing the massive pleural effusion 4 days after the initial surgical repair of the pleura.

cause the dural defect could not be visualized, the space was sealed with fibrin glue and packed with Curaspon. A CSF drainage catheter was inserted under direct vision, at the level of T6–7. However, 4 days later, the effusion filled again, and this time it was massive (Fig. 2). A chest tube was applied. The CSF drainage system was kept in place for 7 days and the chest tube for 12 days.

**Second Postoperative Course.** The patient received parenteral vancomycin and imipenem treatment. He experienced no additional problems. He was followed for 2 weeks in the ward and was discharged after his symptoms were relieved.

## DISCUSSION

Subarachnoid-pleural fistula is a rare type of CSF fistula. The first case was reported in 1959 by Milloy, et al.<sup>33</sup> A search of Medline records revealed that since that first publication 54 cases have been reported. Thirty-seven were secondary to traumatic injury,<sup>1–3,5–8,11,14,15,17,20–24,26,29,30,32–42,44,47–52,55</sup> and 15 to surgery.<sup>4,9,10,12,13,16,19,25,27,28,34,43,45,53,54</sup>

There was one case in which the fistula developed secondary to thoracoscopy,<sup>18</sup> and one spontaneous case secondary to rupture of an intrathoracic meningocele.<sup>46</sup> Six of the surgery-related fistulas were complications of the lateral extracavitary approach to the thoracic spine. The preoperative diagnoses in these patients were as follows: three cases of thoracic disc disease,<sup>13,25,34</sup> two cases of schwannoma,<sup>12,43</sup> and one case of neurofibroma.<sup>45</sup>

### Clinical Presentation

Patients typically present with respiratory stress, and chest x-ray films reveal the pleural effusion. If a spinal tap is performed it reveals the characteristics of a transudate. Monla-Hassan, et al.,<sup>33</sup> have postulated that the biochemical evaluation of a pleural effusion that was drained represented CSF. In our opinion, it is impossible to distinguish between CSF and any other transudational pleural effusion. According to the criteria proposed by Light, et al.,<sup>31</sup> a transudate is described as having pleural fluid/serum protein ratio less than 0.5, a pleural fluid/serum/LDH ratio less than 0.6, and pleural fluid LDH less than two thirds of the upper limit of normal serum value; therefore CSF and any other pleural transudate cannot be distinguished biochemically.

In several reported cases, headache accompanied pleural effusion.<sup>4,10,12,18,21</sup> The headache is caused by two different mechanisms. If the parietal pleura is defective but the visceral pleura is intact, the pressure of the pleural space ranges from  $-5$  to  $-7.5$  cm H<sub>2</sub>O. On the other hand, pressure of CSF is 10 to 15 cm H<sub>2</sub>O. This leads to a suction effect, and CSF diverts into the pleural space, which decreases CSF pressure and produces headache.<sup>12</sup> On the other hand, if the visceral pleura is defective, the pressure in the pleural space, overcomes the CSF pressure during expiration and air leaks into the subarachnoidal space which produces pneumocephalus.<sup>4,10,21</sup> Boyev, et al.,<sup>4</sup> have presented a case in which the pneumocephalus was so prominent that the presenting clinical picture consisted of gait disturbance and confusion. Air within the ventricles has been demonstrated by CT scanning in few cases.<sup>4,18,21</sup>

### Diagnostic Modalities

Diagnostic procedures for the demonstration of the subarachnoid-pleural fistulas include CT myelography, myeloscintigraphy, and MR imaging. Computerized tomography myelography is easy and very effective in demonstrating the fistula. Peter and Rode<sup>40</sup> have postulated that MR imaging is superior to both the aforementioned modalities, and it is especially valuable in demonstrating the associated spinal cord damage in traumatically injured patients, but analysis of the literature indicates that it is not a widely accepted diagnostic tool in these cases.

### Treatment Strategies

Choosing the treatment strategy is the most challenging aspect of the case. Several authors<sup>6,11,13,14,53</sup> have postulated that conservative therapy is suitable in most of the patients. However, other authors<sup>15,19,26,48</sup> have argued that surgical repair of the fistula is essential and that early intervention in these cases is rewarding. There are also other suggested treatment options. Díaz, et al.,<sup>12</sup> have reported placing a pleuroperitoneal shunt that was not successful. Katz, et al.,<sup>27</sup> have reported that they successfully treated a case by placing lumboperitoneal shunt to drain the fistula.

External lumbar drainage is generally an effective treatment technique in the management of patients with any type of CSF fistula. In our case a lumbar catheter was

## Subarachnoid–pleural fistula

inserted initially at L4–5, but effective CSF drainage could not be established because the CSF was sucked up by the pleural space due to the pressure difference. During the surgical repair of the pleura, a CSF drainage system was applied at T6–7, and it was supposed to work because CSF circulates downwards posterior to the spinal cord and then upward anterior to the spinal cord. Even when the catheter was introduced surgically from above the level of the fistula, the CSF could not be drained. Therefore, CSF drainage systems should be used in conjunction with a chest tube. Takenouchi, et al.,<sup>53</sup> have stated that surgical repair cannot be successful if a chest tube is not inserted postoperatively. Another question is when to remove the chest tube and the drainage catheter. Seven days of CSF drainage is adequate for the closure of the dural defect, but the chest tube should be kept in place for several additional days to protect the recently closed dural defect from pressure differences. Dickman, et al.,<sup>13</sup> also stated that the CSF drainage system should be removed first and the chest tube should be left in place for a few more days.

In conclusion, although the subarachnoid–pleural fistula is a rare type of CSF fistula, its potential diagnosis should always be kept in mind. It is best diagnosed using CT myelography or myeloscintigraphy. Conservative therapy, which consists of placement of a chest tube and a CSF drainage system, should be the initial treatment strategy in every patient, and surgical repair of the fistula should be considered only if the conservative treatment fails.

### References

1. Azambuja PC, Fragomeni LS: Traumatic chylothorax associated with subarachnoid–pleural fistula. **Thorax** 36:699–700, 1981
2. Beutel EW, Roberts JD, Langston HT, et al: Subarachnoid–pleural fistula. **J Thorac Cardiovasc Surg** 80:21–24, 1980
3. Born JD, Stevenaert A: [Traumatic rupture of the medulla with subarachnoid–pleural fistula.] **Neurochirurgie** 26:409–411, 1980 (Fr)
4. Boyev P, Krasna MJ, White CS, et al: Subarachnoid–pleural fistula after resection of a pancoast tumor with hyponatremia. **Ann Thorac Surg** 60:683–685, 1995
5. Bramwit DN, Schmelka DD: Traumatic subarachnoid–pleural fistula. **Radiology** 89:737–738, 1967
6. Brown WH, Stothert JC Jr: Traumatic subarachnoid–pleural fistula. **J Trauma** 25:1105–1107, 1985
7. Campos BA, Silva LB, Ballalai N, et al: Traumatic subarachnoid–pleural fistula. **J Neurol Neurosurg Psychiatry** 37:269–270, 1974
8. Cantu RC: Value of myelography in thoracic spinal cord injuries. **Int Surg** 56:23–26, 1971
9. D'Addario R, Greenberg J, O'Neill TJ, et al: Pneumocephalus: an unusual case. **J Neurol Neurosurg Psychiatry** 37:271–274, 1974
10. Da Silva VF, Shamji FM, Reid RH, et al: Subarachnoid–pleural fistula complicating thoracotomy: case report and review of the literature. **Neurosurgery** 20:802–805, 1987
11. DePinto D, Payne T, Kittle CF: Traumatic subarachnoid–pleural fistula. **Ann Thorac Surg** 25:477–478, 1978
12. Diaz P, Máillo A, Hernández J, et al: Subarachnoid–pleural fistula as a complication of the lateral-extracavitary approach to thoracic intraspinal neurinoma. **Spine** 20:1515–1518, 1995
13. Dickman CA, Rosenthal D, Regan JJ: Reoperation for herniated thoracic discs. **J Neurosurg** 91 (Spine):157–162, 1999
14. Djergaian RS, Roberts JD, Ditunno JF Jr, et al: Subarachnoid–pleural fistula in traumatic paraplegia. **Arch Phys Med Rehabil** 63:488–489, 1982
15. Dosios TJ: Traumatic subarachnoid–pleural fistula. **Ann Thorac Surg** 64:1227, 1997
16. el-Kalliny M, Tew JM Jr, van Loveren H, et al: Surgical approaches to thoracic disc herniations. **Acta Neurochir** 11:22–32, 1991
17. Fell SC: Traumatic subarachnoid–pleural fistula. **Ann Thorac Surg** 63:1511, 1997
18. Fernandez P, Guyot M, Mangione P, et al: Subarachnoid–pleural fistula complicating thoracoscopy: value of In-111 DTPA myeloscintigraphy. **Clin Nucl Med** 24:985–986, 1999
19. Frantz PT, Battaglini JW: Subarachnoid–pleural fistula: unusual complication of thoracotomy. **J Thorac Cardiovasc Surg** 79:873–875, 1980
20. Gibbons JR: Persistent pleural effusion and post-traumatic subarachnoid–pleural fistula. **Eur J Cardiothorac Surg** 6:165, 1992
21. Godley CD, McCabe CJ, Warren RL, et al: Traumatic subarachnoid–pleural fistula: case report. **J Trauma** 38:808–811, 1995
22. Greydanus WK, Morgan RJ, Ahuja RK, et al: Diplopia and pneumoencephalocele after chest wall resection and intraoperative radiation therapy. **J Thorac Cardiovasc Surg** 91:792–773, 1986
23. Hicken P, Martin J, Hakanson S: Computed tomography demonstration of subarachnoid–pleural fistula. **Can Assoc Radiol J** 41:222–224, 1990
24. Higgins CB, Mulder DG: Traumatic subarachnoid–pleural fistula. **Chest** 61:189–190, 1972
25. Hofstetter KR, Bjelland JC, Patton DD, et al: Detection of bronchopleural-subarachnoid fistula by radionuclide myelography: case report. **J Nucl Med** 18:981–983, 1977
26. Jimenez MF, Roca R, Alvarez C, et al: Persistent pleural effusion and post-traumatic subarachnoid–pleural fistula. **Eur J Cardiothorac Surg** 5:554–556, 1991
27. Katz SS, Savitz MH, Osei C, et al: Successful treatment by lumbo-peritoneal shunting of a spinal subclavicular fistula following thoracotomy. **Neurosurgery** 11:795–796, 1982
28. Labadie EL, Hamilton RH, Lundell DC, et al: Hypoliquorric headache and pneumocephalus caused by thoraco-subarachnoid fistula. **Neurology** 27:993–995, 1977
29. LeBlanc HJ, Nadell J: Spinal cord injuries in children. **Surg Neurol** 2:441–444, 1974
30. Lesoin E, Delandsheer E, Thomas CE III, et al: Persistent pleural effusion and traumatic subarachnoid–pleural fistula. **Lancet** 2:772–773, 1982
31. Light RW, MacGregor MI, Luchsinger PC, et al: Pleural effusions: the diagnostic separation of transudates and exudates. **Ann Intern Med** 77:507–513, 1972
32. Lovaas ME, Castillo RG, Deutschmann CS: Traumatic subarachnoid–pleural fistula. **Neurosurgery** 17:650–652, 1985
33. Milloy FJ, Correll NO, Langston HT: Persistent subarachnoid–pleural space fistula. **JAMA** 169:1467, 1959
34. Monla-Hassan J, Eichenhorn M, Spickler E, et al: Duropleural fistula manifested as a large pleural transudate: an unusual complication of transthoracic diskectomy. **Chest** 114:1786–1789, 1998
35. Moorehead RJ, Spence RA, Gibbons JR, et al: Traumatic subarachnoid–pleural fistula. **Injury** 16:482, 1985
36. Morgan JA: Closure of subarachnoid–pleural fistulae with fibrin sealant. **Eur J Cardiothorac Surg** 2:56–57, 1988
37. Osaka K, Handa H, Watanabe H: Traumatic intrathoracic meningocele (traumatic subarachnoid–pleural fistula). **Surg Neurol** 15:137–140, 1981
38. Overton MC III, Hood RM, Farris RG: Traumatic subarachnoid–pleural fistula. Case report. **J Thorac Cardiovasc Surg** 51:729–731, 1966

39. Ozer H, Barki Y, Bertan V: Traumatic arachnoido-pleural fistula. Report of a case. **J Can Assoc Radiol** **23**:287–289, 1972
40. Peter JC, Rode H: Traumatic subarachnoid–pleural fistula: case report and review of the literature. **J Trauma** **344**:303–304, 1993
41. Pollack II, Pang D, Hall WA: Subarachnoid–pleural and subarachnoid–mediastinal fistulae. **Neurosurgery** **26**:519–525, 1990
42. Pollack II, Pang D, Scwabassi R: Recurrent spinal cord injury without radiographic abnormalities in children. **J Neurosurg** **69**:177–182, 1988
43. Qureshi MM, Roble DC, Gindin RA, et al: Subarachnoid–pleural fistula. Case report and review of the literature. **J Thorac Cardiovasc Surg** **91**:238–241, 1986
44. Rabassa AE, Nusynowitz ML: Detection of subarachnoid pleural fistula. **Neuroradiology** **33**:83–84, 1991
45. Rice TW, Kirsh JC, Schacter IB, et al: Simultaneous occurrence of chylothorax and subarachnoid pleural fistula after thoracotomy. **Can J Surg** **30**:256–258, 1987
46. Rytzman A: Lateral intrathoracic meningocele with spontaneous rupture into the pleural cavity diagnosed with RIHSA myelography. **Neuroradiology** **5**:165–168, 1973
47. Salerni AA, Kuivilla TE, Drvaric DM, et al: Traumatic subarachnoid–pleural fistula in a child. A case report. **Clin Orthop** (**264**):184–188, 1991
48. Sarwal V, Suri RK, Sharma OP, et al: Traumatic subarachnoid–pleural fistula. **Ann Thorac Surg** **62**:1622–1626, 1996
49. Saylor M, Hayne RA, Dorner RA: Traumatic subarachnoid–pleural fistula. **J Thorac Cardiovasc Surg** **59**:847–850, 1970
50. Shannon N, Kendall B, Thomas DGT, et al: Subarachnoid–pleural fistula—case report and review of the literature. **J Neurol Neurosurg Psychiatry** **45**:457–460, 1982
51. Silver JR: Chest injuries and complications in the early stages of spinal cord injury. **Paraplegia** **5**:226–245, 1968
52. Singhi P, Nayak U, Ghai S, et al: Rapidly filling pleural effusion due to a subarachnoid–pleural fistula. **Clin Pediatr** **26**:416–418, 1987
53. Takenouchi N, Miura T, Otake S, et al: [Cerebrospinal fluid fistula following an operation of mediastinal schwannoma: a case report.] **Kyobu Geka** **46**:1152–1155, 1993 (Jpn)
54. Trammer A: Persistent subarachnoid–pleural cerebrospinal fluid fistula following excision of a thoracic ganglioneuroma. Case report. **Z Kinderchir** **45**:109–110, 1990
55. Wilson C, Jumer M: Traumatic spinal–pleural fistula. **JAMA** **179**:812–813, 1962

---

Manuscript received May 17, 2000.

Accepted in final form June 20, 2000.

Address reprint requests to: Serdar Ozgen, M.D., PK: 4 81082, Goztepe, Istanbul, Turkey. email: omurga@turk.net.